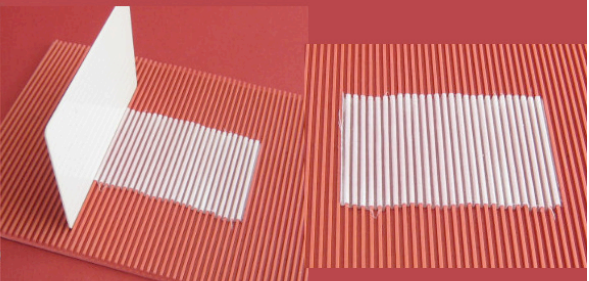


Materials



pleat the large piece of cotton

with a brush make the cotton wet with diluted stiffener let dry (with hair dryer is faster)



the larger dried piece looks like this now



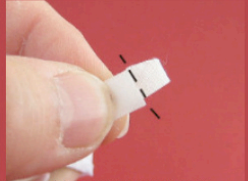
heat the iron press the iron on the fabric to flatten



make two seams on the tiny cotton piece



with a piece of cotton, measure the head of the model



cut the measure piece, leaving a piece for the seam



cut the tiny piece the same length

you can also take the bottle cap and use that as head model



tiny piece of cotton is cut to length



cut the large piece the same length



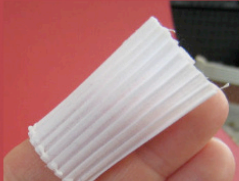
like this



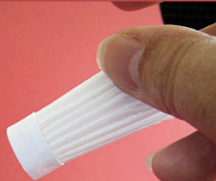
glue the tiny piece make sure it fits



glue the large piece



put a line of glue along one edge



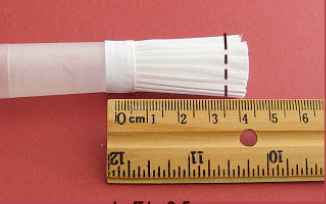
glue INSIDE the band



a little too high!



now use the cap



cut off to 3,5 cm or 1,4 inches total height



stitch a thread along the upper edge



make a knot and tie together



now make the top moist and press along the edge



make sure the edges are sharp close the center with glue



FINISHED !!

Tasting...



Let the cooking begin!!

by Annemarie Kuikkela copyright 2010 not to be reproduced or published please feel free to print one copy for your own use